

# State of Wyoming Corner Record

(In compliance with the CORNER PERPETUATION AND FILING ACT, Wyoming Statutes, 1997 Section 33-29-140 et. seq., and the Rules and Regulations of the Board of Professional Engineers and Professional Land Surveyors)

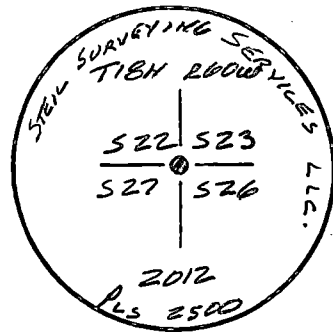
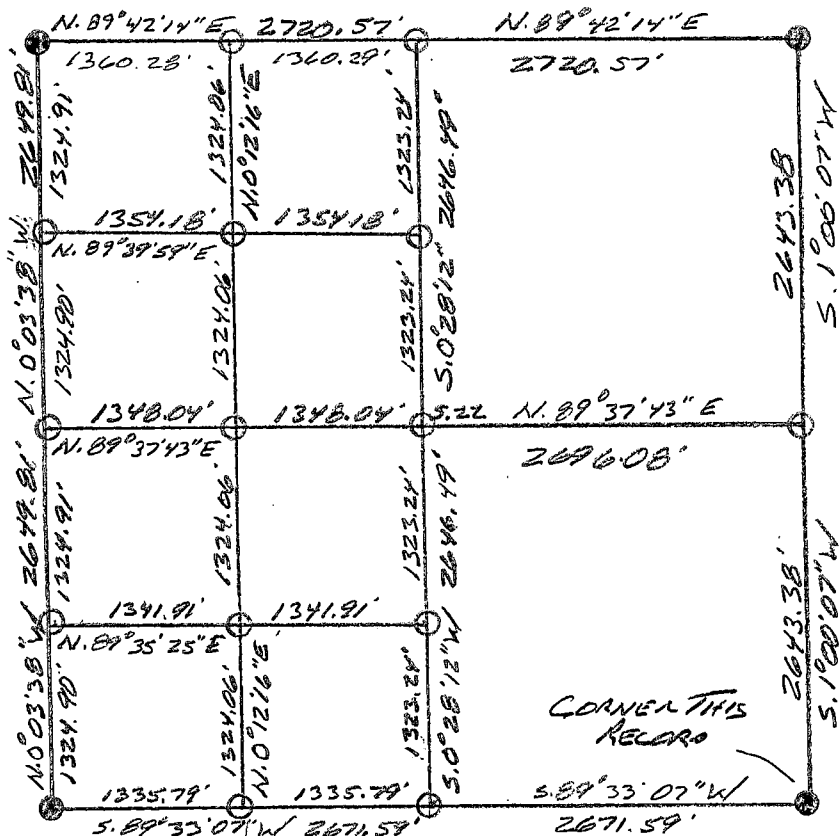
Reverse side of this form may be used if more space is needed.

Record of original survey and citation of source of historical information (if corner is lost or obliterated). Description of corner monumentation evidence found and/or monument and accessories established to perpetuate the location of this corner. Sketch of relative location of monument, accessories, and reference points with course and distance to adjacent corner(s) (if determined in this survey). Method and rationale for reestablishment of lost or obliterated corner.

**RECORD:** SET A LIMESTONE 22X16X6, 18" INCHES DEEP MARKED WITH 2 NOTCHES ON EAST SIDE & 2 NOTCHES ON SOUTH FOR CORNER TO SEC'S 22, 23, 26 & 27.  
**MONUMENT FOUND:** FOUND NOTHING.

**MONUMENT SET:** SET A 5/8" X 24" REBAR WITH A 3/4" ALUMINUM CAP DOWN 18" BELOW WHEAT FIELD SURFACE WITH THE CAP STAMPED AS SHOWN BELOW. MON. WAS SET BETWEEN THE SW COR. SEC. 22 & THE SE CORNER SEC. 23 ON LING.

**REFERENCES:** MONUMENT LIES 3' SOUTH OF A E-W OVERHEAD ELECTRIC LINE & 71-50' EAST OF A POWER POLE.



## Monument Inscription

Date of Field Work: 4-13-12 Office Reference: 12187

### Cross Index Plat

	1	2	3	4	5	6	7	8	9	10	11	12	13	14	15	16	17	18	19	20	21	22	23	24	25	
A																										
B	+	+	+	+	+	+	+	+	+	+	+	+	+	+	+	+	+	+	+	+	+	+	+	+	+	+
C	+	6	+	5	+	4	+	3	+	2	+	1	+													
D	+																									
E	+																									
F	+																									
G	+	7	+	8	+	9	+	10	+	11	+	12	+													
H	+																									
J	+																									
K	+																									
L	+	18	+	17	+	16	+	15	+	14	+	13	+													
M	+																									
N	+																									
O	+																									
P	+	19	+	20	+	21	+	22	+	23	+	24	+													
Q	+																									
R	+																									
S	+																									
T	+	30	+	29	+	28	+	27	+	26	+	25	+													
U	+																									
V	+																									
W	+																									
X	+	31	+	32	+	33	+	34	+	35	+	36	+													
Y	+																									
Z	+																									
	1	2	3	4	5	6	7	8	9	10	11	12	13	14	15	16	17	18	19	20	21	22	23	24	25	

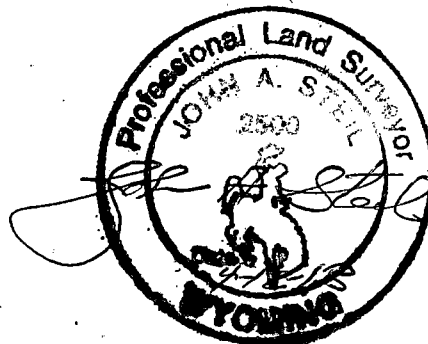
Firm/Agency, Address

**STEIL SURVEYING SERVICES LLC**  
**1102 WEST 19th STREET**  
**CHEYENNE WY 82001**

Telephone Number: **(307) 634-7273**

This corner record was prepared by me or under my direction and supervision.

SEAL & SIGNATURE



Corner Name SE CORNER Section 22, T 18 N, R 60 W, 6th P.M. Cross-Index No.: R-17

County: LARAMIE Wyoming

SBRPEPLS/PLSW: March 1994; PLSW January 1998

